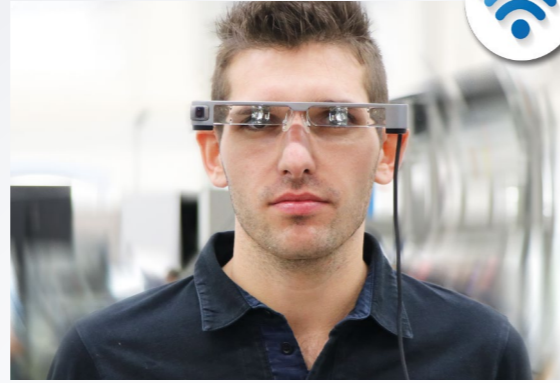


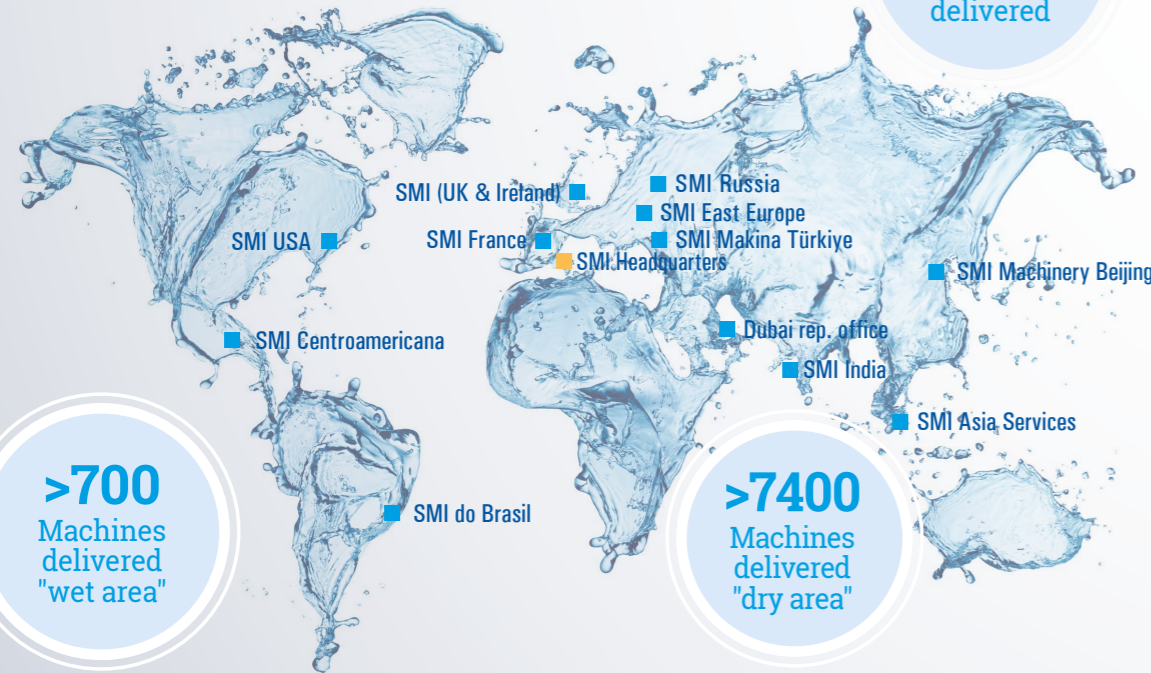
AFTER-SALES SERVICES

When purchasing a SMI product, you can always count on our Help Desk Center, which provides customized solutions for optimizing the performance of your systems in terms of reliability, efficiency, energy saving and reduction of operating costs. This can be achieved only through a rich portfolio that includes upgrades, updates, routine preventive maintenance and special maintenance packages. SMI's Help Desk operates through a network of technical service centers that also supply original spare parts. These centers are strategically located throughout the world and provide 360° support with native personnel specialized in the mechanical, electric and electronic fields. SMI customers can count on continuous technical support provided through on-line services (via telephone, internet or augmented reality smart glasses) and on-site services, the latter used when you need to place, install and test your machine or restore its full functionality in case of serious failures. SMI also organizes training courses to instruct the customer's machine operators on how to make the best use of the systems they run. Training courses are held in the main international languages by senior technicians, both at SMI headquarters, in rooms equipped with the latest technologies, and directly at the customer's facility.



SMI in the world

>280
Bottling
lines
delivered



>700
Machines
delivered
"wet area"

>7400
Machines
delivered
"dry area"



Turn-key lines...

...for each and every bottling & packaging need

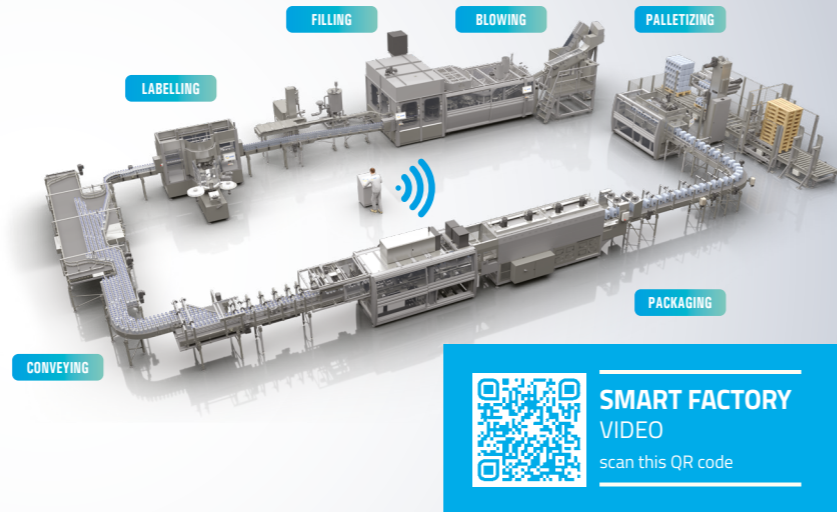


Turn-key lines...

...for each and every bottling & packaging need

SMI designs and manufactures complete bottling & packaging systems, mainly for the food and beverage sector, but also for the detergent, personal hygiene, chemical and pharmaceutical industries. SMI's "industry 4.0 compliant" complete lines are the ideal solution for production requirements up to 50,000 bottles per hour, based on technologically advanced choices that ensure high efficiency, large running flexibility, low energy consumption and a quality/price ratio among the best on the market.

SMI's proposals in terms of turnkey systems range from complete "cost-saving" and compact lines to complex and articulated solutions, with a wide range of intermediate products that can satisfy any present and future requirement in terms of production speed, product to be packaged, level of automation and environmental conditions.



PACKERS

SMI designs and manufactures a wide range of fully automatic machines for the secondary packaging of containers such as plastic and glass bottles, jars, cans, cardboard briks and many more. These packers are characterized by an ergonomic design, a high operational flexibility and easy and fast format changeover operations, elements which make them suitable for the requirements of countless customers and market sectors.

Depending on the machine infeed and the types of packs that can be made, they can be divided into the categories shown aside:



PACKERS WITH IN-LINE INFEEED

- » Shrink wrappers (LSK, CSK and SK series)
 - packaging in film only, cardboard pad+film, cardboard tray, cardboard tray+film
 - production speed up to 450 packs/minute (SK working on triple lane)
- » Stretch film packers (SFP series)
 - packaging in stretch film
 - production speed up to 30 packs/minute
- » Wrap-around case packers (LWP, CWP and WP series)
 - packaging in wrap-around cases or corrugated cardboard trays, rectangular or octagonal, with standard or extra-large size and with walls with the same or different heights
 - production speed up to 80 packs/minute
- » Pick & place case packers (ACP series)
 - packaging in American cardboard cases (RSC cases)
 - production speed up to 25 packs/minute
- » Packers in multipack cardboard (MP and TPP series)
 - overlapping cardboard sleeves ("over the top" or "neck through") or cardboard top pad
 - production speed up to 300 packs/minute
- » Combined packers (LCM, CM and CM R series)
 - packaging in film only, cardboard pad+film, tray only and wrap-around cases
 - production speed up to 80 packs/minute

PACKERS WITH 90° INFEEED

- » Shrink wrappers (ASW series)
 - packaging in film only, cardboard pad+film, cardboard tray, cardboard tray+film
 - production speed up to 150 introductions/minute
- » Wrap-around case packers (ACW series)
 - packaging in wrap-around cases or corrugated cardboard trays, rectangular or octagonal, with standard or extra-large size and with walls with the same or different heights
 - production speed up to 150 introductions/minute
- » Combined packers (AFCW series)
 - packaging in film only, cardboard pad+film, tray only and wrap-around cases
 - production speed up to 150 introductions/minute



BLOWERS & FILLERS

SMI is among the world's leading manufacturers of rotary stretch-blow moulders for the production of rPET/PET/PP bottles. SMI's stretch-blow moulders make use of the most advanced technologies in this sector for achieving efficiency, flexibility, energy saving and low running and maintenance costs. These machines are available in a wide range of models, from 2 to 16 moulds, able to produce up to 50,000 containers per hour up to 3-liter collations and up to 7,200 containers per hour in the 5 to 10-liter collations. All SMI blow moulders are equipped with the AirMaster system, which allows recovering up to 40% of the high-pressure compressed air used during the bottle production process. SMI's stretch blow-moulders are available both as stand alone machines and integrated into ECOBLOC® compact systems that combine in a single system the functions of a rotary stretch-blow moulder, an electronic rotary filler and a rotary capper (and, on request, even a rotary labeller).



EBS K ERGON SERIES

- » Ultra-compact rotary stretch-blow moulders
 - Output rate up to 10,000 bottles per hour (1 L)
 - rPET/PET/PP containers up to 3 liters
 - Motorized stretch rods

EBS KL ERGON SERIES

- » Ultra-compact rotary stretch-blow moulders
 - Output rate up to 25,000 bottles per hour (1 L)
 - rPET/PET/PP containers up to 3 liters
 - Motorized stretch rods

EBS E ERGON SERIES

- » Rotary stretch-blow moulders
 - Output rate up to 50,000 bottles per hour (1 L)
 - rPET/PET/PP containers up to 3 liters
 - Motorized stretch rods

EBS KL HC ERGON SERIES

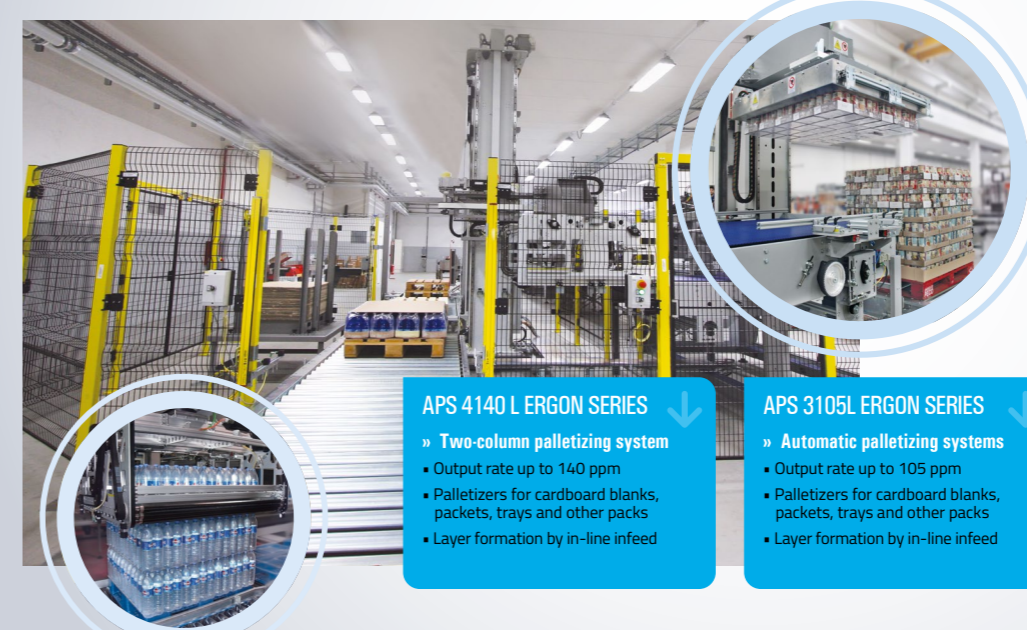
- » Rotary stretch-blow moulders for high capacity containers
 - Output rate up to 7,200 bottles per hour (5 L)
 - rPET/PET/PP containers up to 10 liters
 - Motorized stretch rods

ECOBLOC® SERIES

- » blowing, filling and capping systems
 - Output rate up to 50,000 bottles per hour
 - rPET/PET/PP containers up to 3 liters
 - For still or sparkling liquids

PALLETIZERS

SMI palletizing systems set a new standard in the industry of two-Cartesian-axis fixed-column robotic palletizers. APS ERGON series is the outcome of an intense activity of research and innovation, which allowed producing technologically advanced systems, capable of providing each user with the fittest packaging solutions according to his specific needs. SMI palletizing systems enable to streamline the end-of-line operations of countless industrial sectors: beverages, food, chemicals, pharmaceuticals, detergents, glass, paper and many more. SMI palletizers meet production needs from 15 to 140 packs/minute (according to the size of the product handled and to the palletization pattern selected) and are available in many different configurations, both in stand-alone version and integrated with a SMI packer to form a Packbloc system.



APS 615/620 ERGON SERIES

- » Compact palletizing systems
 - Output rate up to 15/20 ppm
 - Palletizers for cardboard blanks, packets, trays and other packs
 - Layer formation by in-line infeed

APS 1540 ERGON SERIES

- » Automatic palletizing systems
 - Output rate up to 40 ppm
 - Palletizers for cardboard blanks, packets, trays and other packs
 - Layer formation by 90° infeed

APS 1570 ERGON SERIES

- » Automatic palletizing systems
 - Output rate up to 70 ppm
 - Palletizers for cardboard blanks, packets, trays and other packs
 - Layer formation by 90° infeed

APS 3070 ERGON SERIES

- » Automatic palletizing systems
 - Output rate up to 70 ppm
 - Palletizers for cardboard blanks, packets, trays and other packs
 - Layer formation by in-line infeed

APS 4140 L ERGON SERIES

- » Two-column palletizing system
 - Output rate up to 140 ppm
 - Palletizers for cardboard blanks, packets, trays and other packs
 - Layer formation by in-line infeed

APS 3105L ERGON SERIES

- » Automatic palletizing systems
 - Output rate up to 105 ppm
 - Palletizers for cardboard blanks, packets, trays and other packs
 - Layer formation by in-line infeed